



# Service Lifts

**5 - 250kg Capacity**



# BKG Service Lifts

Manufactured in Paderborn in the centre of the German industrial heartland, BKG Service Lifts really are the high quality, well engineered product that you would expect from a German based manufacturer.

Over 50 years refining the product means that a BKG Service Lift will be easy to use whilst providing optimum performance and long term reliability.

BKG Service Lifts are available in two basic configurations; Dumbwaiters for the transport of food, small items or documents and Trolley Lifts for the transport of bulky but light items such as laundry, light waste or general retail goods.

Every model in the BKG range comes in the form of a self-contained "kit" complete within its own self-supporting structure to minimize site installation time and reduce builder's works required. In most cases, the structure also houses the lift motor so a separate motor room is often not required. All parts incorporated in the lift carry 12 months guarantee.

All BKG Service Lifts comply with the European Standard EN81-3:2000 which is seen as the most suitable way for a service lift to achieve compliance with European Machinery Directive 2006/42/EC.

Our standard products are available ex-stock, while our bespoke lifts are all manufactured specifically to order.



# BKG DUMBWAITERS

## Advantage Stock Dumbwaiters

Developed to meet the requirements of the very short lead time market, the BKG 50kg and 100kg capacity Advantage Dumbwaiters are available ex-stock from Shorts' warehouse in the UK.

These service level lifts are available as two or three stop, single or through entry machines and come complete with vertical bi-parting landing doors and their own galvanised steel structure. The maximum travel of 4m (two stop) or 7.3m (three stop) can be easily adjusted on site. All Advantage Dumbwaiters can be supplied with either single or 3-phase drives and all car and landing finishes across the range are stainless steel, with landings having 2 hour fire ratings as standard. There is also a choice of brushed aluminium roller shutter or stainless steel vertical bi-parting door for car entrance protection.



Capacity	Model	Speed m/s	Max Travel 2-stop mm	Max Travel 3-stop mm	Min Serving Height mm	Headroom (based on 800mm serving height)	Shaft Width mm	Shaft Depth mm	Car Width mm	Car Depth mm	Car Height mm
50kg	50.45/4	0.45	4000	7300	700	2600	750	750	460	570	800
100kg	100.45/4	0.45	4000	7300	700	2600	1000	1000	710	820	800

## Advantage Standard Specification

### Capacity

50kg or 100kg

### Floors

2 or 3 stop

### Speed

0.45 m/s

### Drive system

High efficiency traction drive

### Power requirement

400v 3 phase or 240v 1 phase

### Travel

2 floor up to 4.0m (adjustable on site)

3 floor up to 7.3m (adjustable on site)

### Arrangements

Single or through entry (adjustable on site)

2 floor up to 4 entrances

3 floor up to 6 entrances

### Structure

Galvanised steel structure

### Car

Finished in stainless steel

Removable mid-shelf

### Landing doors

Vertical bi-parting doors finished in stainless steel

2 hours fire-rated

Safety locks fitted

### Control system

Microprocessor controller

Automatic push button landing stations

## Electrical

- Additional auxiliary main contactor
- Phase failure reversal relay
- Landing push stations complete with car position indicator, lift in use indicator and door open signal
- Lift arrival buzzer
- Anti-quick-reversal
- Overtravel timer
- Hand lamp
- Light and socket within machine compartment
- Wiring in loom form

## General

- Full set of warning notices
- User manual
- Comprehensive installer instructions
- Comprehensive UK style layout drawings and wiring diagrams
- Compliance with EC Machinery Regulations 2006/42/EC and EN81-3:2000
- Carries the "CE" Mark

## Optional Features

- Lockable machine access door finished in Stainless Steel with 2 hours fire rating
- Additional landing entrance assemblies with 2 hour fire-rated
- Heated car floor
- Additional car shelves
- Machine room access ladder
- Brushed aluminium roller shutter for car entrance fitted with electrical contact
- Stainless steel bi-parting shutter for car entrance fitted with electrical contact
- (Internal car dimensions and opening height will reduce when entrance protection is fitted)
- Travel extension pack to increase travel from 4m to 6m (2 floor lift only)

# Bespoke Dumbwaiters

Wherever food needs to be transported between floors, the BKG range of bespoke dumbwaiters offers the ideal answer. Each BKG Bespoke Dumbwaiter is tailored to meet the most exacting of requirements and each lift is built specifically to match customers' needs.

All BKG Bespoke Dumbwaiters come with vertical bi-parting landing doors and their own galvanized steel structure and are built to a standard specification. Conventional models come complete with a machine access door. Capacity, travel, speed, number of stops, car dimensions, loading, entrance type, finishes etc can all be varied to customize the lift to match the site requirements.

To satisfy hygiene demands, Stainless steel shelves and floors are supplied as standard. Other stainless steel surface finishes are available as an option. A special seamless hygienic car is available for more rigorous requirements. Automatic "hands free" doors are also available to speed up the loading and unloading process. Optional car protection and heated compartments are especially useful in food transporting applications.

Special Chain Drive models are available to make maximum use of a limited footprint and in applications where low headroom is a problem, a bottom drive variant is available.

## Dumbwaiter Standard Specification

- Three phase drive unit
- Serve up to 6 floors / 15m travel
- Complete with galvanised steel structure and machine access door
- Zintec or galvanised steel car with stainless steel base and removable shelf
- Zintec or galvanised steel vertical bi-parting landing doors & frames
- Microprocessor controller

## Electrical

- Additional auxiliary main contactor
- Phase failure reversal relay
- Landing push stations complete with car position indicator, lift in use indicator and door open signal
- Lift arrival buzzer
- Anti-quick-reversal
- Overtravel timer
- Hand lamp
- Light and socket within machine room
- Wiring in loom form

## General

- Full set of warning notices
- User manual
- Comprehensive installer instructions
- Comprehensive UK style layout drawings and wiring diagrams
- Compliance with EC Machinery Regulations 2006/42/EC and EN81-3:2000
- Carries the "CE" Mark

## Dumbwaiter Specification Variables

### Loading

- one side
- opposite sides
- adjacent sides

### Machine Location

- above the structure
- below the structure
- at the side of the structure

### Capacity

- 50kg
- 100kg
- 250kg

### Speed

- 0.20m/s
- 0.25m/s
- 0.30m/s
- 0.45m/s

### Car Dimensions

- Width 300mm min / 1000mm max
- Depth 320mm min / 1000mm max
- Height 600mm min / 1200mm max

## Optional Features

- Single phase drive unit
- Car, doors & frames in primed steel, stainless steel or special stainless steels
- Fire-rated landing doors and machine access
- Car entrance protection : vertical bi-parting door, roller shutter door
- Load guard baffles
- Shaft cladding in choice of primed steel, zintec, galvanised steel, stainless steel or plastic coated steel panels.
- Governor operated safety gear for applications where there is accessible space below the lift.
- Special requirements can be catered for such as Lloyd's Register of Shipping designs, explosion proof, automatic doors and fully automated loading and unloading.

## Bespoke Suspended Traction Drive Dumbwaiter

BKG Model	50.45/0	50.45/7	100.45/0	100.45/1	100.45/7	100.30/2	300.30/14	300.30/15
<b>Rated Load (kg)</b>	50	50	100	100	100	100	250	250
<b>Speed (m/s)</b>	0.45	0.45	0.45	0.45	0.45	0.30	0.30	0.30
<b>No. of Ropes</b>	3	3	3	3	3	3	5	5
<b>Car Width (CW) (mm) * Min</b>	400	400	400	400	400	400	400	400
<b>Max</b>	600	600	800	1000	900	1000	1000	1000
<b>Car Depth (CD) (mm) * Min</b>	400	500	400	500	500	600	700	800
<b>Max</b>	600	600	800	1000	1000	1000	1000	1000
<b>Car Height (CH) (mm) * Min</b>	600	600	600	600	600	800	800	800
<b>Max</b>	800	800	800	1200	1200	1200	1200	1200
<b>Door Level</b>	Service	Service	Service	Service	Service	Floor	Service	Floor
<b>Loading</b>	Single or Through	Adjacent	Single or Through	Single or Through	Adjacent	Single or Through	Single or Through	Single or Through
<b>Shaft Width (mm) = CW plus</b>	320	320	320	320	320	320	320	320
<b>Shaft Depth (mm) = CD plus</b>	180	240	180	180	240	180	180	180
<b>If Car Height &lt;= 800mm Headroom (mm) = Serving Height + Car or Door Height plus</b>	1190	1190***	1190**	1190**	1190***	1190	1300	1300
<b>If Car Height &gt; 800mm Headroom (mm) = Serving Height + [1.5xCar Height] plus</b>	n/a	n/a	n/a	790	790***	790	790	790
<b>Pit (mm) = Door Height/2 plus</b>	No pit	No pit	No pit	No pit	No pit	130	No pit	130

\* Car width and depth variable in increments of 50mm. Car height variable in increments of 100mm.

\*\* Models 100.45/48 and 100.45/41 bottom drive models available for low headroom applications.

\*\*\* This dimension will increase if upper floor landing door is on adjacent side of lift.

**Note :** Car entrance protection, safety gears for car or counterweight, special models and options are all available on request.

Car doors may change Minimum Car dimensions and Headroom and Pit requirements. Always check with Shorts.

All Service level dumbwaiters have a minimum serving height of 700mm.



## Bespoke Direct Suspended Chain Drive Dumbwaiter

BKG Model	100.45/3	100.45/8	100.45/6
<b>Rated Load (kg)</b>	100	100	100
<b>Speed (m/s)</b>	0.45	0.45	0.45
<b>No. of Chains</b>	2	2	2
<b>Car Width (CW) (mm) * Min</b>	300	400	400
<b>Max</b>	600	800	900
<b>Car Depth (CD) (mm) * Min</b>	320	500	500
<b>Max</b>	350	800	1000
<b>Car Height (CH) (mm) * Min</b>	600	600	600
<b>Max</b>	800	800	1200
<b>Door Level</b>	Service	Service	Service
<b>Loading</b>	Single or Through	Adjacent	Adjacent
<b>Shaft Width (mm) = CW +</b>	320	320	320
<b>Shaft Depth (mm) = CD +</b>	180	180	180
<b>If Car Height &lt;= 800mm Headroom (mm) = Serving Height + Car or Door Height plus</b>	1190	1190***	1190***
<b>If Car Height &gt; 800mm Headroom (mm) = Serving Height + [1.5 x Car Height] plus</b>	n/a	n/a	790***
<b>Pit (mm)</b>	No pit	No pit	No pit

\* Car width and depth variable in increments of 50mm. Car height variable in increments of 100mm.

\*\*\* This dimension will increase if upper floor landing door is on adjacent side of lift.

**Note :** Car entrance protection, safety gears for car or counterweight, special models and options are all available on request.

Car doors may change Minimum Car dimensions and Headroom and Pit requirements. Always check with Shorts

All service level dumbwaiters have a minimum serving height of 700mm.



# BKG BESPOKE TROLLEY LIFTS

Where there is a requirement to move bulky but light goods between floors, the BKG range of floor loading Trolley Lifts fits the bill.

The basic trolley lift ranges in capacity from 100 to 250kg. It comes with heavy duty hinged landing doors which can be complemented with a choice of drop-bar or lattice gate protection fitted to the car.

All BKG Bespoke Trolley Lifts come with their own galvanized steel structure and are built to a standard specification. Conventional models come complete with a machine access door. Capacity, travel, speed, number of stops, car dimensions, entrance type, finishes etc can all be varied to customize the lift to match the site requirements.

## Trolley Lift Standard Specification

- Three phase drive unit
- Serve up to 6 floors / 15m travel
- Complete with galvanised steel structure and machine access door
- Zintec or galvanised steel car
- Zintec or galvanised steel landing doors & frames
- Microprocessor controller

## Electrical

- Additional auxiliary main contactor
- Phase failure reversal relay
- Landing push stations complete with car position indicator, lift in use indicator and door open signal
- Lift arrival buzzer
- Anti-quick-reversal
- Overtravel timer
- Hand lamp
- Light and socket within machine room
- Wiring in loom form

## General

- Full set of warning notices
- User manual
- Comprehensive installer instructions
- Comprehensive UK style layout drawings and wiring diagrams
- Compliance with EC Machinery Regulations 2006/42/EC and EN81-3:2000
- Carries the "CE" Mark

## Trolley Lift Specification Variables

### Loading

- one side
- opposite sides
- adjacent sides

### Machine Location

- above the structure
- at bottom beside the structure

### Capacity

- 100kg
- 250kg

### Speed

- 0.15m/s
- 0.20m/s
- 0.25m/s
- 0.30m/s

### Car Dimensions

- Width 400mm min / 1000mm max
- Depth 600mm min / 1000mm max
- Height 800mm min / 1200mm max

## Optional Features

- Single phase drive unit
- Double-hinged landing doors
- Car, doors & frames in primed steel, stainless steel or special stainless steels
- Fire-rated landing doors and machine access door
- Car entrance protection : drop bar, picket gate or load guard baffles
- Shaft cladding in choice of primed steel, zintec, galvanised steel, stainless steel or plastic coated steel panels.
- Special requirements can be catered for such as Lloyd's Register of Shipping designs or explosion proof.

## Bespoke Suspended Traction Drive Trolley Lifts

<b>BKG Model</b>	100.30/9	100.30/12	300.30/11	300.30/13
<b>Rated Load (kg)</b>	100	100	250	250
<b>Speed (m/s)</b>	0.30	0.30	0.30	0.30
<b>No. of Ropes</b>	3	3	5	5
<b>Car Width (CW) (mm) * Min</b>	400	600	400	600
<b>Max</b>	1000	1000	1000	1000
<b>Car Depth (CD) (mm) * Min</b>	600	700	800	800
<b>Max</b>	1000	1000	1000	1000
<b>Car Height (CH) (mm) * Min</b>	800	800	800	600
<b>Max</b>	1200	1200	1200	1200
<b>Loading</b>	Single or Through	Adjacent	Single or Through	Adjacent
<b>Shaft Width (mm) = CW +</b>	400	260	400	450
<b>Shaft Depth (mm) = CD +</b>	120	260	120	450
<b>If Car Height &lt;= 1100mm Minimum Headroom (mm)</b>	n/a	n/a	2400	2400
<b>If Car Height &lt;= 1100mm Headroom (mm) = Car or Door Height plus</b>	1300	1300	n/a	n/a
<b>If Car Height &gt; 1100mm Headroom (mm) = Car or Door Height plus</b>	1300	1300	1300	1300
<b>Pit (mm)</b>	260	260	260	260

\* Car width and depth variable in increments of 50mm. Car height variable in increments of 100mm

**Note :** Car entrance protection, safety gears for car or counterweight, special models and options are all available on request.  
Car doors may change Minimum Car dimensions and Headroom and Pit requirements. Always check with Shorts.

Hinged door with drop bar



Hinged door with lattice gate



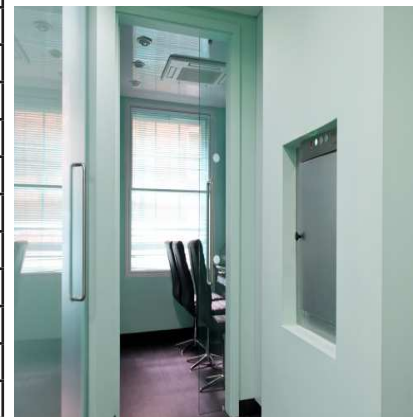
# BKG SPECIAL PRODUCTS

## Document Lifts

Where there is a requirement to move paperwork between floors, there is no need to install a fully-fledged dumbwaiter that can handle upwards of 50kg. BKG offer two small capacity service level dumbwaiters specially designed for documents and other very light and non-bulky items.

Although rated at 5kg and 20kg with the drive at the bottom of the shaft, BKG Document Lifts are in every other respect just like their big brothers. They come complete with their own galvanized steel structure and have easy to use small hinged landing doors and just like the larger models are produced to comply with the European Standard EN81-3:2000.

<b>BKG Model</b>	5.35/38	20.35/38
<b>Rated Load (kg)</b>	5	20
<b>Speed (m/s)</b>	0.35	0.35
<b>No. of Ropes</b>	2	2
<b>Car Width (CW) (mm)</b>	250 or 350	250 or 350
<b>Car Depth (CD) (mm)</b>	310	500
<b>Car Height (CH) (mm)</b>	500	500
<b>Minimum Sill Height at First Floor (mm)</b>	860	860
<b>Loading</b>	Single or Through	Single or Through
<b>Shaft Width (mm) = CW +</b>	290	290
<b>Shaft Depth (mm)</b>	420	610
<b>Headroom (mm) = Sill Height at Top Floor plus</b>	670	670
<b>Pit (mm)</b>	No pit required	No pit required



Note : Minimum sill height at all floors other than first is 700mm.

## Dumbwaiter for Low Headroom Situations

This lift has been designed for buildings where the headroom at upper floor is insufficient to accommodate a conventional top drive lift. The double chain drive lift has the winding unit placed at the bottom of the lift shaft under car within a separate machine area. The access door is normally located under the serving sill. The lift occupies the same shaft plan size as a conventional top drive lift, with the only stipulation that the sill height at the bottom floor serviced has to be a minimum of 900mm.

Standard specification and specification variables are the equivalent (or the same) as the conventional bespoke dumbwaiters. Like all other BKG Service lifts from Shorts, this 100.45/41 model complies with the European Standard EN81-3: 2000.



<b>BKG Model</b>	100.45/41
<b>Rated Load (kg)</b>	100
<b>Speed (m/s)</b>	0.30
<b>Number of Chains</b>	2
<b>Car Width (cw) (mm) *Min</b>	500
<b>Max</b>	800
<b>Car Depth (cd) (mm) *Min</b>	500
<b>Max</b>	1000
<b>Car Height (ch) (mm) *Min</b>	700
<b>Max</b>	1200
<b>Door Level</b>	SERVICE
<b>Loading</b>	Single or through
<b>Shaft Width (mm) = cw +</b>	320
<b>Shaft Depth (mm) = cd +</b>	180
<b>Headroom (mm) Serving height + (1.5 x Car height) +</b>	250
<b>Pit</b>	No Pit

NOTE: The minimum car height (ch) = car width (cw) + 200mm  
NOTE: Adjacent entrances, machine room access door on adjacent wall opposite guides available as an option.

Car entrance protection, safety gear for car, special models and options are all available on request

Safety gear model requires additional shaft width & headroom

Car doors will reduce internal car size, always check with Shorts

Larger car options may reduce running speed, always check with Shorts

All service level dumbwaiters have a minimum serving height of 700mm

\*Car width & depth variable in increments of 50mm. Car height variable in increments of 100mm



# Under-bar Service Lift

This specialised 100kg 2-stop low headroom lift is ideal for bars, pubs and restaurants. It is effectively a serving height lift at the bottom floor (often the cellar), with a bi-parting door arrangement, but turns into a hinged door floor loading lift at its top floor. The use of a low level winding unit arrangement means that the top floor entrance will fit unobtrusively under any counter or bar.

## Under-bar Service Lift Standard Specification

### Capacity

100kg

### Floors

2 or 3 stops with variable travel (additional stops on request)

### Speed

0.45 m/s

### Drive System

High efficiency chain and sprocket drive unit at the base of the lift.

### Power Requirement

400V 3 Phase or 240V 1 Phase

### Arrangements

Single or through entry

### Structure

Galvanised steel structure with polyurethane buffers

Lockable machine access door

### Car

600mm x 500mm x 700mm (w x d x h)

Zintec finish with floor and mid-shelf in Stainless Steel

### Landing doors

Vertical Bi-parting doors at bottom/ mid landing

Hinged door at top landing

Zintec finish

Safety locks fitted

### Control system

Microprocessor controller within lockable cubicle positioned outside of lift shaft at lowest level

Automatic push button landing stations

## Electrical

- Pit stop switch
- Additional auxiliary main contactor
- Phase failure reversal relay
- Landing push stations complete with car position indicator, lift in use indicator and door open signal
- Lift in use indicators
- Lift arrival buzzers
- Anti-quick-reversal
- Overtravel timer
- Hand lamp
- Light and socket within machine compartment
- Wiring in loom form

## General

- Full set of warning notices
- User manual
- Comprehensive installer instructions
- Comprehensive UK style layout drawings and wiring diagrams
- Compliance with EC Machinery Regulations 2006/42/EC and EN81-3:2000
- Carries the "CE" Mark

## Optional Features

- Single phase drive unit
- Other non-standard car sizes
- Stainless Steel finishes to car, landings and machine access door
- Fire rating to landings and machine access door
- Diagonal drop bar for car entrance protection complete with electrical contact
- Load guard baffles
- Shaft cladding in choice of primed steel, zintec, galvanised steel, stainless steel or plastic coated steel panels.

<b>B.K.G. Model</b>	100.45/48
<b>Rated Load (kg)</b>	100
<b>Speed (mps)</b>	0.30
<b>Chain and Sprocket Drive Location</b>	At base
<b>Car Width (mm)</b>	600
<b>Car Depth (mm)</b>	500
<b>Car Height (mm)</b>	700
<b>Vertical Bi-parting Door</b>	Bottom / middle floor
<b>Hinged Door</b>	Top floor
<b>Through Entry Loading</b>	yes
<b>Adjacent Entry Loading</b>	-
<b>Lift Shaft Width (mm)</b>	970
<b>Lift Shaft Depth (mm)</b>	680
<b>Minimum Headroom (mm)</b>	1000
<b>Pit Depth (mm)</b>	No pit required

Note: Car entrance protection, safety gears for car or counterweight are available on request.

Car doors may change minimum car dimensions and headroom pit requirements. Always check with Shorts.



## Combination Lift

Shorts BKG service lift range includes a special “Two Tier” Combination lift, which is effectively two lifts in one so that different types of goods can be moved in the same unit. The upper part of the lift is a serving level dumbwaiter with a vertical bi-parting door arrangement while the lower half is a floor level loading small goods lift with a hinged door arrangement.

<b>BKG Model</b>	100.30/39	300.30/40
<b>Rated Load (kg)</b>	100	250
<b>Speed (m/s)</b>	0.30	0.30
<b>No. of Ropes</b>	3	5
<b>Car Width (CW) (mm) Min</b>	550	550
<b>Max</b>	600	600
<b>Car Depth (CD) (mm)</b>	700	700
<b>Car Height (CH) (mm)</b>	1700	1700
<b>Loading</b>	Single or Through	Single or Through
<b>Shaft Width (mm) = CW +</b>	400	400
<b>Shaft Depth (mm) = CD +</b>	180	180
<b>Headroom (mm) = Car or Door Height plus</b>	1200	1400
<b>Pit (mm)</b>	260	260

Note : Car entrance protection, safety gears for car or counterweight are available on request.  
Car doors may change Minimum Car dimensions and Headroom and Pit requirements.  
Always check with Shorts.



## Trolley Lift with UK Style Horizontal Sliding Doors

A specific 250kg floor loading trolley lift model has been developed by BKG for the UK market which incorporates 2 hour fire-rated galvanised landing shutter doors to minimise door intrusion into the loading space. An electrically interlocked picket gate fitted to the car prevents goods falling out when in motion. The remainder of the lift is exactly the same specification as the conventional BKG Bespoke Trolley Lift products.

<b>BKG Model</b>	300.30/42
<b>Rated Load (kg)</b>	250
<b>Speed (m/s)</b>	0.30
<b>No. of Ropes</b>	5
<b>Car Width (CW) (mm) * Min</b>	400
<b>Max</b>	1000
<b>Car Depth (CD) (mm) * Min</b>	900
<b>Max</b>	1000
<b>Car Height (CH) (mm) * Min</b>	600
<b>Max</b>	1200
<b>Loading</b>	Single or Through Entry
<b>Shaft Width (mm) = CW +</b>	570
<b>Shaft Depth (mm) = CD +</b>	140
<b>Headroom (mm) = Car or Door Height + Serving Height +</b>	1300
<b>Pit (mm)</b>	260

\* Car width and depth variable in increments of 50mm. Car height variable in increments of 100mm

Note : Safety gears for car or counterweight are available on request.



# BKG GOODS LIFTS

*In addition to Service Lifts, we also offer the full range of BKG Goods Lifts, with capacities from 300 to 1,000kg.*

These are available in two basic configurations; standard Bespoke Goods Lifts with capacities of 300 to 500kg and the more heavy duty Goodsmover Lifts with capacities of 500 to 1,000kg. There is also a range of Special Goods Lifts which include Pallet Lifts and Goods With Attendant Lifts.

As with the Service Lifts, every model in the Goods Lift range comes in the form of a self-contained "kit" complete within its own structure to minimise site installation time and reduce builder's works required. In most cases, the structure also houses the lift motor and controller, so a separate motor room is often not required. All parts incorporated in the lift carry 12 months guarantee.

All Goods Lifts come with heavy duty hinged landing doors – single or double dependent on car size – which can be complimented with a choice of drop-bar or lattice gate protection to the car. Fire-rated concertina landing doors are available as an option. In most cases, the drive unit is fixed at the top of the structure with a chain drive arrangement, however in applications where low headroom is a problem, top or bottom side located drum drive variants are available. Conventional models come complete with a machine access door. Capacity, travel, speed, number of stops, car dimensions, entrance type, finishes etc can all be varied to customize the lift to match the site requirements.



All BKG Goods Lifts comply with the European Standard EN81-31:2010 – Category A. This is seen as the most suitable way for a goods lift to achieve compliance with European Machinery Directive 2006/42/EC.